

## IST ❄️ MULTI-ICE

## MI-1060



### MI-1060 Main Features:

- High capacity and easy to install
- Low operational costs
- Fast, efficient and gentle cooling
- Easy to operate and maintain
- Light weight, compact and robust design
- Power efficient with big output
- Complies with food processing standards

### IST Multi-Ice 1060 General System Description:



**Portable filter bracket with pressure indicator and quick-connections.**

Twin filtering system is optional



**Variable process water flow results in different ice concentration.**

From left: 15%, 25% and 35% ice



**Thick Multi-Ice at 40% concentration stored in a insulated buffer tank.**

0,5 to 7,5t tanks available



**Up to date Multi-Ice delivery on demand for fresh fish chilling in tubs at sea.**

Ice from buffer tank or ice machine



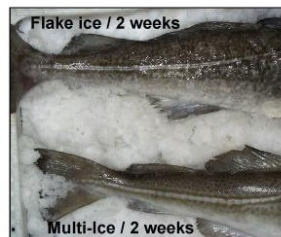
**Thick Multi-Ice pumped from buffer tank at sea.**

Maximum efficiency in ice distribution



**Fresh fish in boxes landed after 14 fishing days.**

Up to 20% more space for fish in boxes



**Outstanding results after up to 2 - 3 weeks storage at sea.**

Multi-Ice chills up to 20 times faster

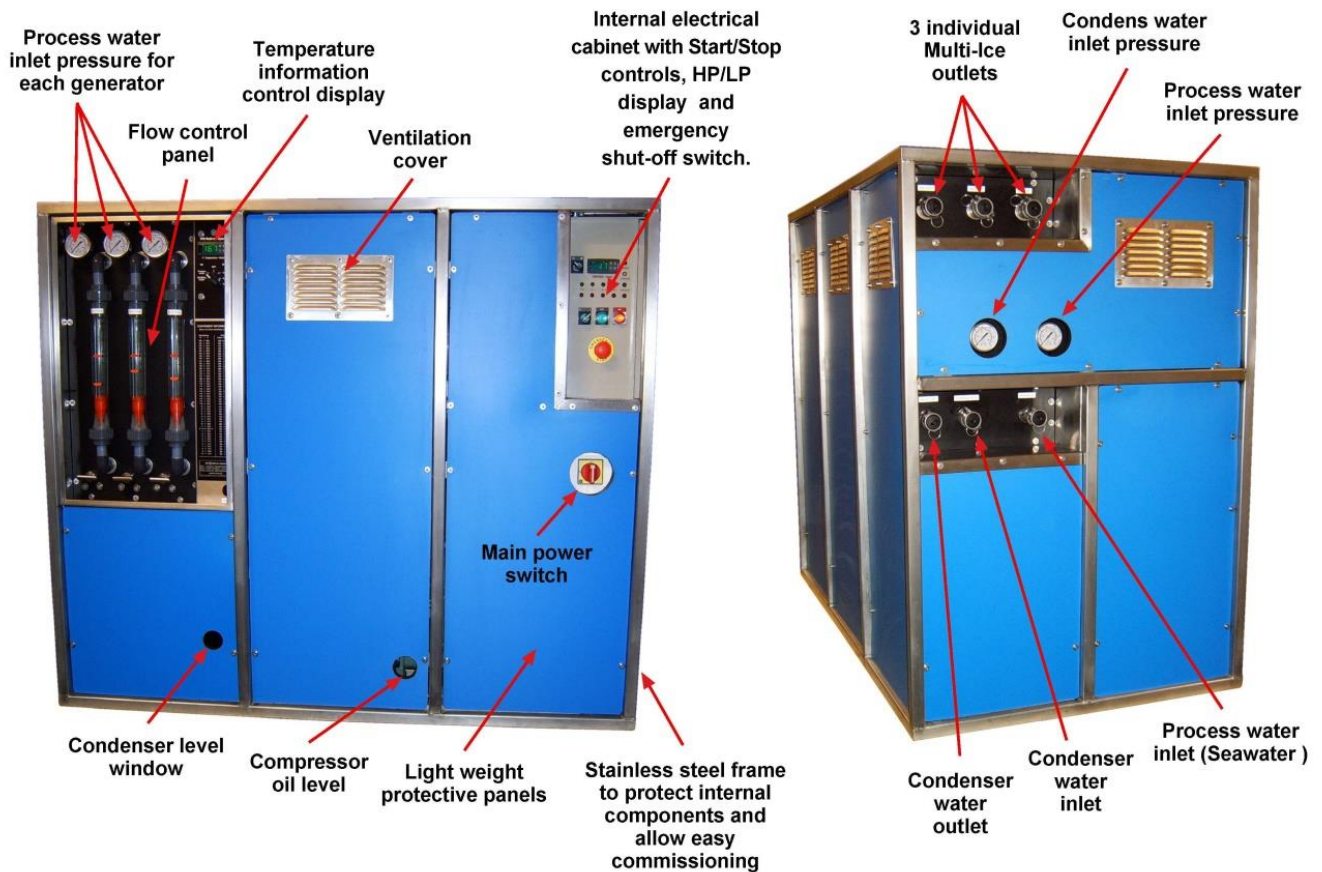


**Average temperature in fish after 2 weeks in Multi-Ice.**

Provides extended shelf life of fish

IST ❄️ MULTI-ICE

## IST Multi-Ice 1060 Specifications



## IST Multi-Ice 1060 Technical Details:

Ice Production Capacity:		MI-1060 / 5-8°C	MI-1060 / 41-46°F
Multi-Ice @ 10% Ice*	(m3/24h / ft3/24h)	62,27	2.198,13
Multi-Ice @ 20% Ice*	(m3/24h / ft3/24h)	31,13	1.098,89
Multi-Ice @ 30% Ice*	(m3/24h / ft3/24h)	20,75	732,48
Multi-Ice @ 40% Ice*	(m3/24h / ft3/24h)	15,56	549,27
Cooling capacity 24 hrs.	Kcal. / BTU	498.048	1.975,09
Approximate Power Requirements ( kW )		16,4 - 18,6	16,4 - 18,6
Measurements & Weight:			
Length of unit	mm / inches	1450	57,09
Width of unit	mm / inches	850	33,46
Height of unit	mm / inches	1250	49,21
Weight of unit	kg. / lbs	472	1.040,58
Input Requirements:			
Condenser water @ 15°C	m3/h ( 2bar / 35-40 Psi)	5,2 m3/h	1.373,69 USG/h
Max Process water pr. hour	at 4,5 to 5 bar / 60 Psi	2.700 L/h	713,2 USG/h
Power options: 1) 1x230V 2) 3x400V / 3x480		2)	2)

Each unit can be modified upon request for each application.

Seagain ApS Willemoesvej 2 DK-9850 Hirtshals Danmark  
[www.seagain.com](http://www.seagain.com) tel. +45 4058 4638 [tj@seagain.com](mailto:tj@seagain.com)